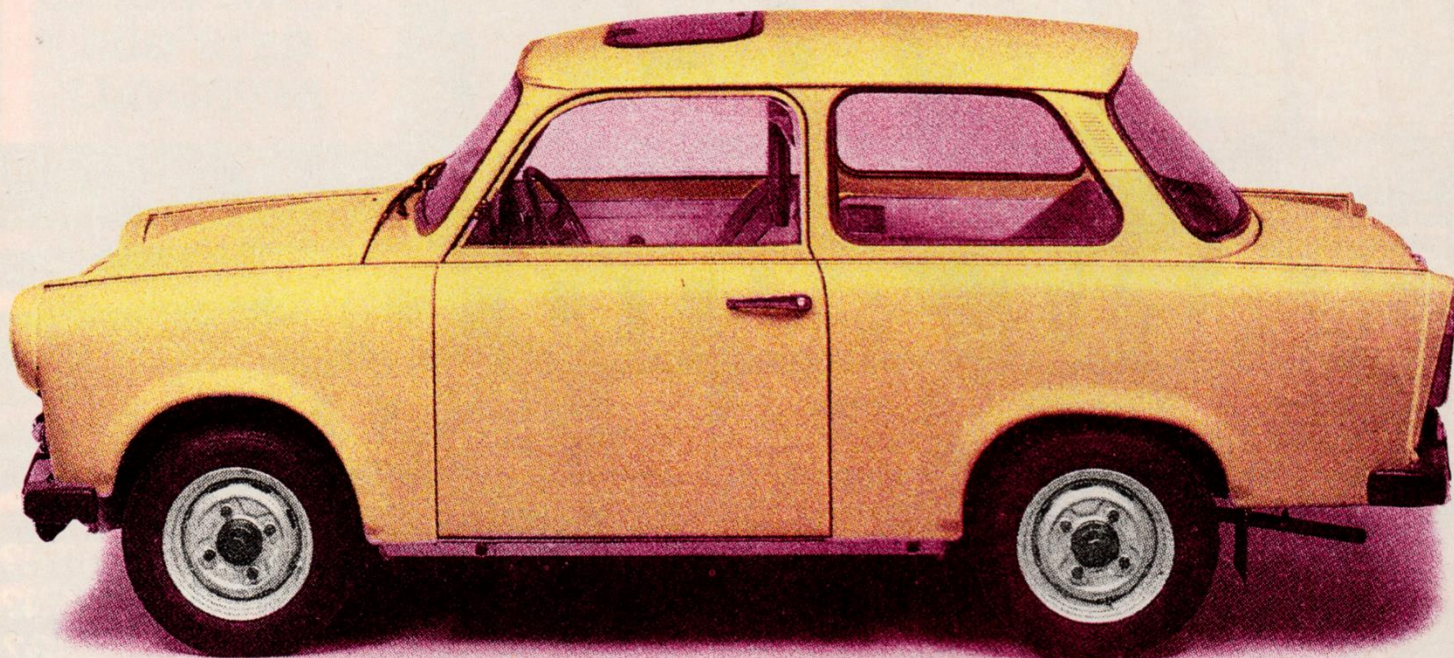


A new gasoline-powered car for \$2,675 . . .

We Introduce Trabant



So reliable, it requires no costly U.S. dealer network! Runs on same fuel as Rolls-Royce and Ferrari! Top speed is double its horsepower! Price includes: full-width parcel shelf; textile floor covering; dual-tone horn; manifold heating. It's Trabant, from IFA-Mobile (DDR)! Allow 4-6 months for delivery!

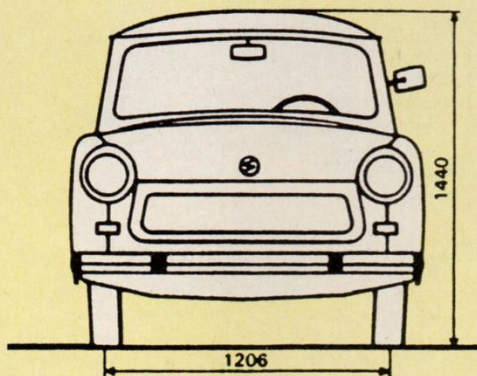
For the budget-minded: At 1/18th the price, the Trabant 601S de luxe seats twice as many persons as a Porsche 928S4!

For milady: Seats covered with "biber" imitation leather, washable. Both front seats adjust via roller-supported rails!

For the serious road-driver: front-wheel drive with 600 c.c. two-stroke engine developing 26 hp DIN!

PRAISES UNANIMOUS

"A car that comes up to high standards—reliable, robust, manoeuvrable, low maintenance," quotes the Trabant brochure!



"Your constant companion for leisure time, holiday and job, providing room for 4 passengers and much luggage space," it continues.

2 COLOR CHOICES

Color choices are cinder grey or egg beige. Further standard fittings are reversing lights; draught-free ventilation; hazard warning signal flasher!

Each model of the Trabant car can be equipped with Hycomat. Hycomat is an automatic

clutch working on hydraulic and electric principles. It is particularly convenient for disabled persons!

LIKE THE CHEVROLET CORVETTE

Durable welded steel body with platform frame and duraplastic sheeting follows Chevrolet Corvette construction principle!

So buy the Trabant 601S de luxe, the \$2,675 gasoline-powered, four-wheeled car. The firm of IFA-Mobile (DDR) has been building it for over 22 years.

Notice: the Trabant 601S de luxe may not conform to all safety regulations in your State. In most cases a waiver may be obtained.

Write for sales form. Many U.S. regions are yet available for distributorships.

TRABANT IFA-MOBILE * VEB SACHSENRING * Automobilwerk Zwickau, DDR

TRANSPORTMASCHINEN EXPORT-IMPORT exporters DDR 1086 Berlin



Trabant