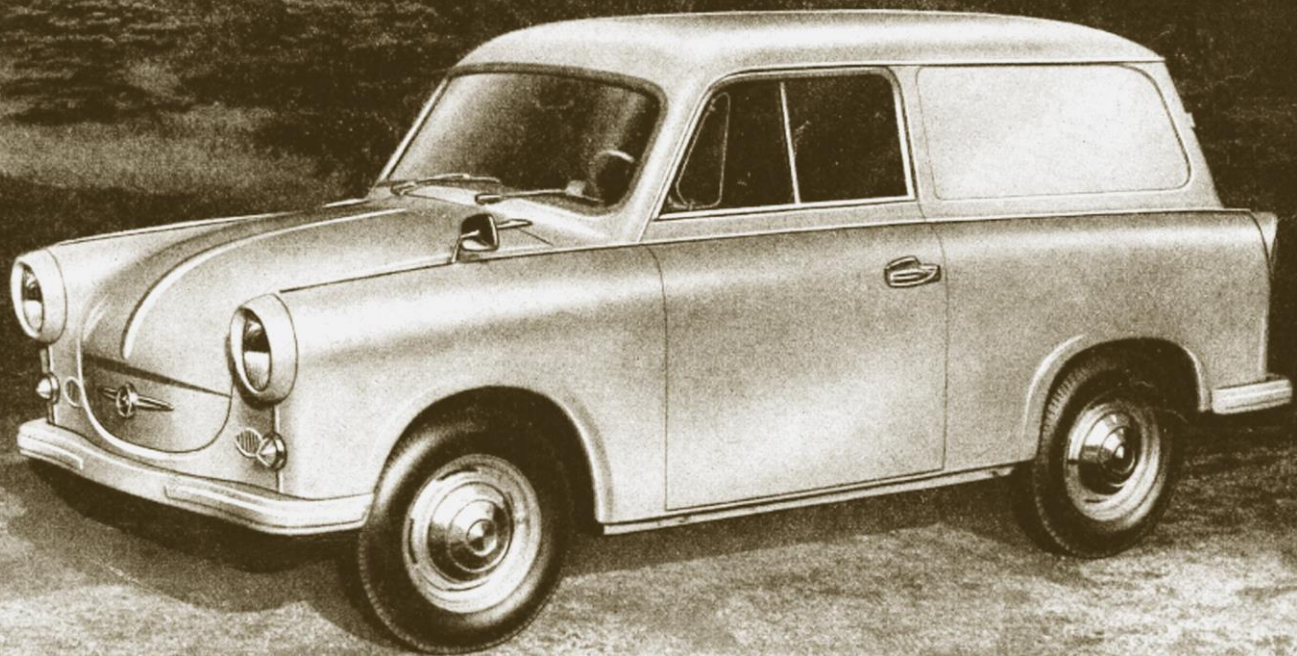


Trabant



VEB SACHSENRING AUTOMOBILWERKE ZWICKAU

This is the perfect Delivery Van for the smaller business enterprise. Next the driver's seat there is still another one, and the payload space is measuring 1.20 x 1.18 metres (3.94 x 3.87 ft.) in length resp. in width, and, consequently, is a transporter for versatile all-the-year-round jobs.

The large lateral areas can be used advantageously for advertising purposes by application of Trade Marks or other adequate inscriptions. The rear door with large window can be opened wide for easy access during loading and deloading performances.

The unpretentious, air-cooled two-stroke, double-cylinder engine is guaranteeing a permanent readiness for use. 20 HP which are being transmitted to the front wheel drive over a four-gear unit are imparting the TRABANT Delivery Van a top speed of approx. 90 km = 56 miles per hour. The sheet steel structure which has been welded to the platform frame is forming the supporting element and is lined with Duroplast plastic material. The economy of the TRABANT Delivery Van is especially underlined by its nominal fuel consumption of 6.8 litres = 1.5 Imp. gallons per 100 km.

After all:

Trabant the small-sized car with the large-scale advantages!

Technical Specifications of the SACHSENTRING TRABANT

Engine

Construction Otto engine
Working process Two-stroke petrol engine with rotary valve

Number of cylinders 2 cylinders
Disposition of cylinders cross to the longitudinal axle
Cylinder bore 66 mm
Piston stroke 73 mm
Cubic capacity 500 c. c.
Compression ratio 7
Performance, max. 20 HP at 3,900 r. p. m.
Max. torque 4,5 mkg at 2,750 r. p. m.
Lubrication mixture lubrication
Lubricating material HYZET-two-stroke lubricating oil (in accordance with the two-stroke lubricating oil of the international standards)

Cooling system

Cooling system air cooling
axial fan by means of V-belt drive from crankshaft (V-belt dimension: 13 x 975 mm)

Carburettor

BVF - flat draught carburettor 28 HB 2-1

Ratio of mixture Petrol: oil = 33 : 1

Clutch

Single dry-plate clutch

Transmission

Gear ratio	1st ratio	4.08
	2nd ratio	2.32
	3rd ratio	1.52
	4th ratio	1.03
	reverse ratio	5.34

Connection Lever type steering
Construction of the differential gear bevel differential gear

Axle ratio 4,94
Additional installation blockable freewheeling

Ignition

Battery ignition
Coil ignition Single inside of the coil box for all cylinders

Electric generator

Power 180 Watt, 6 Volt

Battery

lead plate accumulator
6 Volt 56 Ah in conformity with DIN 72311

Chassis

Frame platform frame with sheet steel structure, welded together to form a unitary body and chassis construction

Front axle

Fastening Single wheel suspension

Springing Cross leaf spring (semi-elliptic spring)

Wheel suspension at the upper cross leaf spring, at the lower steering arm

Shock absorbing double-acting telescopic shock absorber

Drive double joint shaft (inside: flexible rubber joint) (outside: metal joint)

Rear axle

Fastening Single wheel suspension
Construction oscillating axle with triangular guider

Springing Cross leaf spring with progressive efficiency

Shock absorbing double-acting telescopic shock absorber

Steering rack-and-pinion steering
Turning circle appr. 10 meters (= 32 ft)

Brakes inside shoe brake

Foot brake hydraulic four-wheel brakes
Hand brake operates mechanically on the rear wheels

Wheels

Disc wheels with four holes graduation
Size of felly 4 J x 13
Tyres 5.20 x 13

Fuel system

Position below the bonnet at the right side of the front wall
Total contents 24 litres
Reserve about 4 litres

Body

Construction Sheet steel structure, welded together with the ground carrying plate
Body shell with outer lining of Duroplast

Doors 2 doors and 1 backdoor
Number of seats 2 seats with increased loading place

Bolster leatherette covering
Heating by hot-air from cooling fan crossing the exhaust heating

Dimensions

Wheel base	2020 mm (79 1/2 in)
Overall length	3361 mm (132 1/4 in)
Overall width	1493 mm (58 3/4 in)
Overall height:	1460 mm (57 1/2 in)

Weights

Total weight	1000 kg
Dead weight ready for start	660 kg

Useful load	2 persons and 210 kg luggage
-------------	------------------------------

Performance

Top speed	90 km/h
Touring speed	80 km/h
Nominal fuel consumption according to DIN 70030	6.8 litres = 1.5 Imp. gall. per 100 km (Depending on the resp. driving speeds varying between 6 and 8.5 litres per 100 km)



EXPORTEUR.

TRANSPORTMASCHINEN EXPORT-IMPORT

DEUTSCHER INNEN-UND AUSSENHANDEL - BERLIN WB
DEUTSCHE DEMOKRATISCHE REPUBLIK